

Beverly – Sub 92 (Linn County) Transmission Line Project

PROJECT OVERVIEW

ITC Midwest is planning to build an electric transmission line that travels through Linn, Johnson and Muscatine counties from ITC Midwest's Beverly Substation in Cedar Rapids (Linn County) to the Sub 92 Substation owned by MidAmerican Energy, which is located near West Liberty in Muscatine County. The proposed route includes constructing a new 345,000 volt (345 kV) transmission line that joins the route of an existing 161 kV transmission line which will be removed and rebuilt in a triple circuit configuration (three circuits on the same structures), including a separately proposed 345 kV transmission line for a portion of the route in Linn and Johnson counties. From the Cedar Rapids city limits, the proposed line travels south, then east, then southeasterly into Johnson County. Altogether through the three counties, the line is approximately 49 miles, with about 14 miles in Linn County. This includes approximately 5.3 miles within the City of Cedar Rapids and approximately 8.7 miles outside the Cedar Rapids city limits.

The final route may change and will be determined when easement negotiations with landowners are completed and the Iowa Utilities Commission has approved the project. (Please see map of the proposed line route corridor in Linn County on the back.)

Why is this line needed?

Responding to the needs of the changing energy landscape, the Midcontinent Independent System Operator – MISO – the grid planning organization for our region, has devoted several years of intensive, collaborative effort to develop a Long-Range Transmission Plan – known as LRTP – to build needed high-voltage transmission infrastructure across the region. ITC Midwest was actively involved with this process and advocated for the LRTP projects. One segment of the LRTP portfolio is the proposed Beverly – Sub 92 project.

The Beverly – Sub 92 project will provide numerous benefits and drive value for electric consumers locally and regionally. When completed, this transmission line will:

- Increase transmission infrastructure to **improve system reliability**
- Enhance grid resilience to better **withstand extreme weather**
- **Expand access to generation resources** for electric consumers by reducing transmission system congestion
- Improve distribution of **lower-cost energy resources**, including renewables

Whose approval is required to build this line?

The Iowa Utilities Commission (IUC) grants regulatory approvals, called franchises, to Iowa utilities seeking to build transmission lines in the state. As part of its review process, the IUC reviews many aspects of the project such as the need for the line and the proposed route. The IUC has very clear criteria and a clear process for utilities to follow to request a franchise.

What is being done to ensure this line will be safe?

This line will be designed to meet and even exceed the National Electrical Safety Code (NESC), the nationally-recognized design standard in the United States, as well as the Iowa Electrical Safety Code. Among other things, these codes require construction to meet clearance requirements and withstand extreme weather conditions. As the line owner, ITC Midwest will make sure that the line is clear of trees and other vegetation.



FOR THE GREATER GRID.

ITC MIDWEST 3165 Edgewood Parkway SW, Cedar Rapids, IA 52404
Locations: Albert Lea, Des Moines, Dubuque, Iowa City, Lakefield, Perry
877.ITC.ITC9 (877.482.4829) | www.itcmidwest.com

Beverly – Sub 92 (Linn County) Transmission Line Project

What is ITC Midwest doing to minimize impact on landowners and current land uses?

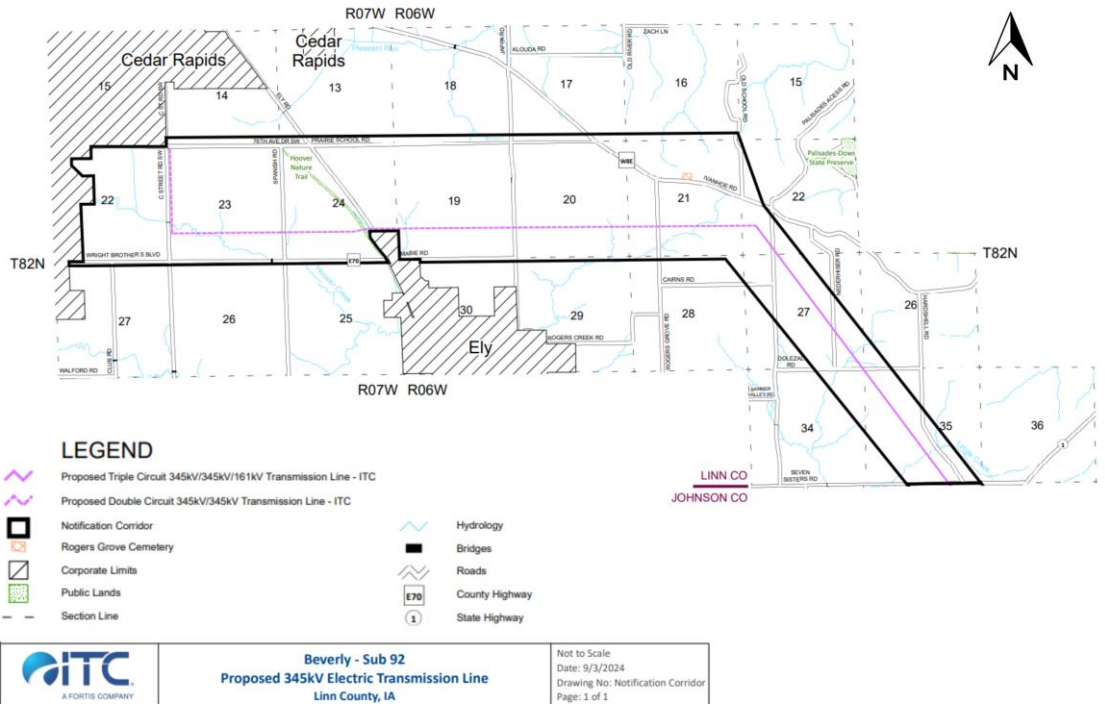
ITC Midwest seeks to minimize the impact of the line on existing land uses. The company is committed to protecting the environment and will fully compensate landowners for any damages that occur during the construction process.

Where possible, this line will be co-located on the same structures with existing transmission lines to mitigate the need for a new transmission corridor across privately owned land. To minimize the footprint of the line, ITC Midwest plans to use steel monopoles.

How will ITC Midwest work with landowners?

Under Iowa law, ITC Midwest cannot negotiate for easements until after the Iowa Utilities Commission holds a public information meeting. For this project, the Linn County meeting was held in Cedar Rapids on October 30, 2024. In the coming weeks, ITC Midwest representatives will begin meeting with affected landowners in the proposed corridor to explain the process and their rights, and ultimately, to begin negotiations to secure voluntary easements.

Landowners are compensated for permitting ITC Midwest to secure an easement on their property. ITC Midwest understands and appreciates the impact that line construction has on landowners and pledges to treat *all* landowners with the utmost respect during this important process.



Shawn Mathis
Project Manager
(319) 899-2163
smathis@itctransco.com



Cory Turenne
Field Supervisor
(262) 689-3033
cturenne@itctransco.com